

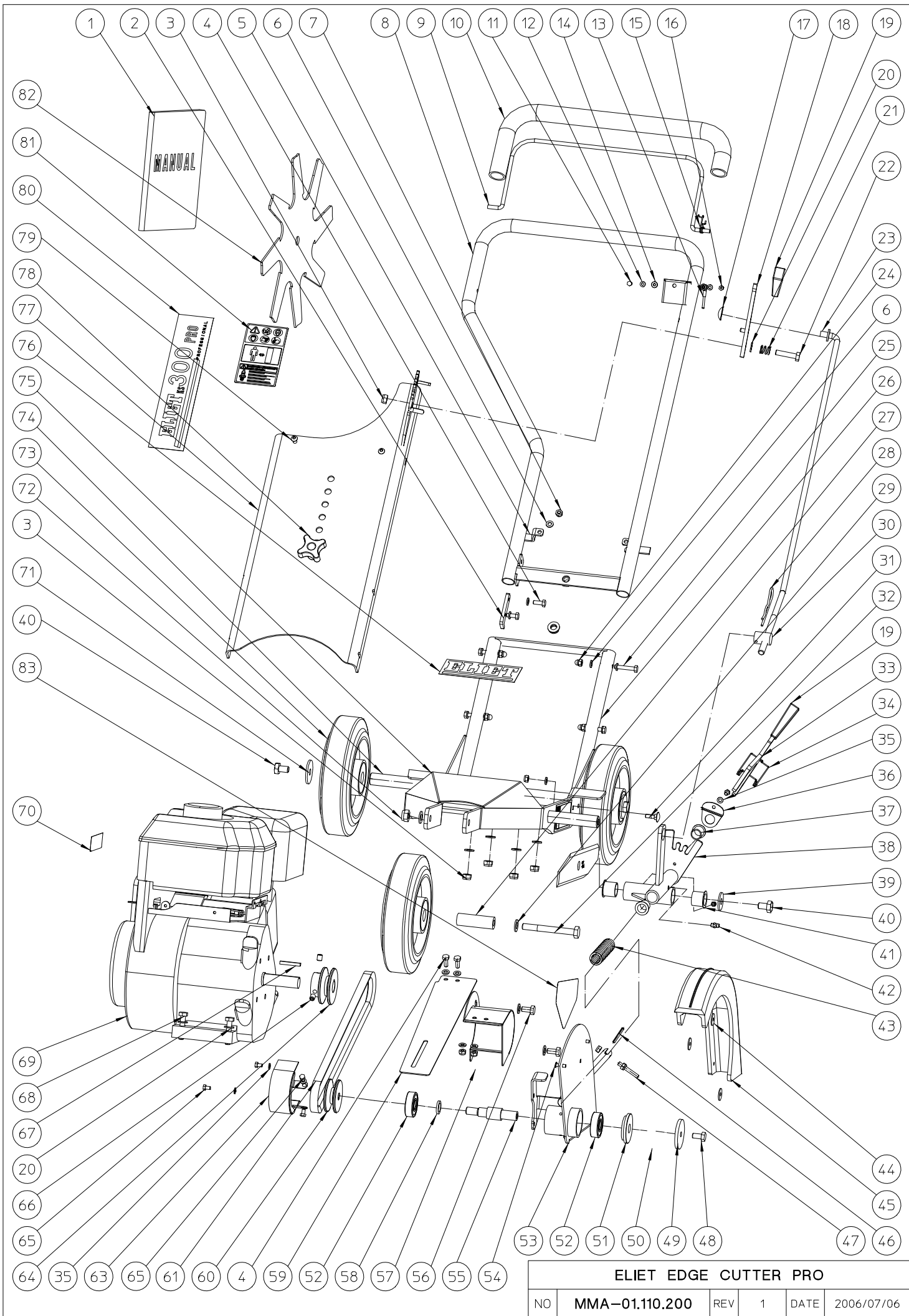
ELIET SPARE PARTS MANUAL

EDGE CUTTER - KS 300 PRO

GENERAL OVERVIEW ASSEMBLYLISTS

	LIST NUMBER	DESCRIPTION	DRAWING NR.	BUILT AFTER
1	ASSEMBLYLIST 1	MACHINE ASSEMBLY ⁽¹⁾	MMA 01 110 200-1	13/04/2005

⁽¹⁾ Version KS 300 PRO from serial n° 0517001



ELIET EDGE CUTTER PRO

NO	MMA-01.110.200	REV	1	DATE	2006/07/06
----	-----------------------	-----	---	------	------------

ELIET SPARE PARTS MANUAL

EDGE CUTTER - KS 300 PRO

ASSEMBLYLIST 1

MACHINE ASSEMBLY

MMA 01 110 200-1

ITEM	PART NUMBER	DESCRIPTION	QUANTITY
1	BZ 201 110 010	MANUAL	1
2	MPA 01 110 550	SPEED NUT UPPER HANDLE	1
3	BS 502 000 800	SELF LOCKING NUT M8 DIN 985	5
4	BS 512 000 616	BOLT M6X16 DIN 933	4
5	MPA 01 110 545	BRACKET UPPER HANDLE	2
6	BS 531 000 600	WASHER M6 DIN 125	16
7	BS 502 000 600	SELF LOCKING NUT M6 DIN 985	8
8	MPA 01 110 530	UPPER BRACKET	1
9	MPA 01 110 540	SAFETY HANDLE (PRESENCE CONTROL)	1
10	BN 231 001 050	SOFT RUBBER GRIP DIA 22MM (L=500MM)	1
11	BS 512 000 412	BOLT M4X12 DIN 933	1
12	BS 531 000 400	WASHER M4 DIN 125	2
13	BE 090 131 601	BLACK WIRE 1.5 CE 160	1
14	BR 112 060 300	NYLON BUSHING WITH COLAR (4.2/5.9/10x3/1.3)	2
15	BV 911 000 040	SPRING	1
16	BS 505 500 400	NUT M4 DIN 1587	1
17	BB 011 000 090	STARLOCK 9MM	1
18	MPA 01 110 060	HEIGHT ADJUSTMENT LEVER	1
19	BN 230 100 200	PLASTIC GRIP 15X6X60	2
20	BS 531 000 800	WASHER M8 DIN 125	11
21	BV 911 000 010	SPRING 14X2X16	1
22	BS 512 000 835	BOLT M8X35 DIN 933	1
23	MPA 01 110 080	HEIGHT ADJUSTMENT ROD	1
24	BS 505 500 600	NUT M6 DIN 1587	3
25	BS 511 000 635	BOLT M6X35 DIN 931	3
26	MPA 01 110 500	LOWER BRACKET	1
27	MPA 01 110 610	WHEEL SHAFT	1
28	BB 040 103 060	HAIRPIN COTTER 3MM	1
29	BS 531 001 000	WASHER M10 DIN 125	2
30	MPA 01 110 100	TRUNNION	1
31	BS 554 100 620	BOLT M6X20 DIN 603	2
32	BS 511 001 049	BOLT M10X90 DIN 931	1
33	MPA 01 110 120	ANGLE SETTING LEVER	1
34	BV 911 000 020	RECALL SPRING	1
35	BS 531 000 500	WASHER M5 DIN 125	5
36	MPA 01 110 190	RETAINER PLATE	1
37	BR 112 152 100	NYLON BUSHING WITH COLAR (15.4/18/23x21/1)	2
38	MPA 01 110 580	CRANK FOR HEIGHT ADJUSTMENT	1
39	BS 532 010 305	WASHER M10X30X2.5	1

ELIET SPARE PARTS MANUAL

EDGE CUTTER - KS 300 PRO

ASSEMBLYLIST 1

MACHINE ASSEMBLY

MMA 01 110 200-1

ITEM	PART NUMBER	DESCRIPTION	QUANTITY
40	BS 512 001 016	BOLT M10X16 DIN 933	3
41	BR 112 202 100	NYLON BUSHING WITH COLAR (20/24/29x21/1)	2
42	BY 100 106 100	GREASE FITTING M6	2
43	BV 911 000 030	SPRING 22X3X143	1
44	BS 532 005 203	WASHER M5X20X1.5	3
45	BR 900 000 540	KNIFE GUARD	1
46	BB 120 040 300	LOCKING PIN 4X30	1
47	BS 581 000 604	STUD M6X40	1
48	BS 512 000 816	BOLT M8X16 DIN 933	1
49	MPA 01 110 566	WASHER FOR KNIFE FIXING	1
50	BU 103 100 200	STANDARD KNIFE	1
51	MPA 01 110 568	WASHER	1
52	BL 001 504 203	BEARING 6302 ZZ	2
53	MPA 01 110 560	ARM FOR KNIFE	1
54	BB 221 105 160	POP PLUG ALU 4.8X16	3
55	MPA 01 110 564	KNIFE SHAFT	1
56	BS 512 040 816	BOLT UNF 5/16"X5/8"	2
57	MPA 01 110 590	SAFETY GUARD PULLEY (ENGINE)	1
58	MPA 01 110 572	SPACER	1
59	BR 910 000 250	SAFETY GUARD PULLEY (NYLON)	1
60	BA 565 705 001	PULLEY SPA 50 M12X1.25	1
61	BA 522 208 250	BELT A 32.5	1
63	MPA 01 110 600	SAFETY GUARD PULLEY (KNIFE SHAFT)	1
64	BA 565 705 601	PULLEY SPA 56X3/4"X3/16"	1
65	BS 512 000 508	BOLT M5X8 DIN 933	5
66	BS 023 000 810	SET SCREW M8X10 DIN 916	2
67	BB 342 050 535	KEY 4.7X4.7X35	1
68	BS 512 000 840	BOLT M8X40 DIN 933	4
69	ENGINE	SEE BOTTOM OF THE PAGE	1
70	BQ 505 010 030	STICKER MAX 3200 RPM 90X25	1
71	BS 532 010 406	WASHER M10X40X3	2
72	BS 502 001 000	SELF LOCKING NUT M10 DIN 985	1
73	BW 320 020 000	FRONT WHEEL ALU 200/50-60	3
74	MPA 01 110 090	REAR WHEEL AXLE	1
75	MPA 01 110 040	CHASSIS	1
76	BQ 501 010 020	STICKER ELIET 130X60	1
77	MPA 01 110 520	HANDLE FRONT PLATE	1
78	BN 630 210 300	LOB KNOB 189-50 M10X30	1
79	BS 522 500 616	SCREW M6X16 ISO 7380	2

ELIET SPARE PARTS MANUAL

EDGE CUTTER - KS 300 PRO

ASSEMBLYLIST 1

MACHINE ASSEMBLY

MMA 01 110 200-1

ITEM	PART NUMBER	DESCRIPTION	QUANTITY
80	BQ 501 110 010	STICKER ELIET KS 300 PRO 260X60	1
81	BQ 505 010 170	SAFETY STICKER 70X115 (PICTOGRAM)	1
82	BU 103 200 200	CUTTINGDISK 8 TOOTH (OPTIONAL)	1
83	BQ 505 010 070	SAFETY STICKER 100X80 (HANDCUTS)	1

ENGINE	BM 202 104 000	HONDA GX 120	4 HP
ENGINE	BM 202 105 500	HONDA GX 160	5.5 HP
ENGINE	BM 201 206 500	B&S INTEK PRO	6.5 HP